

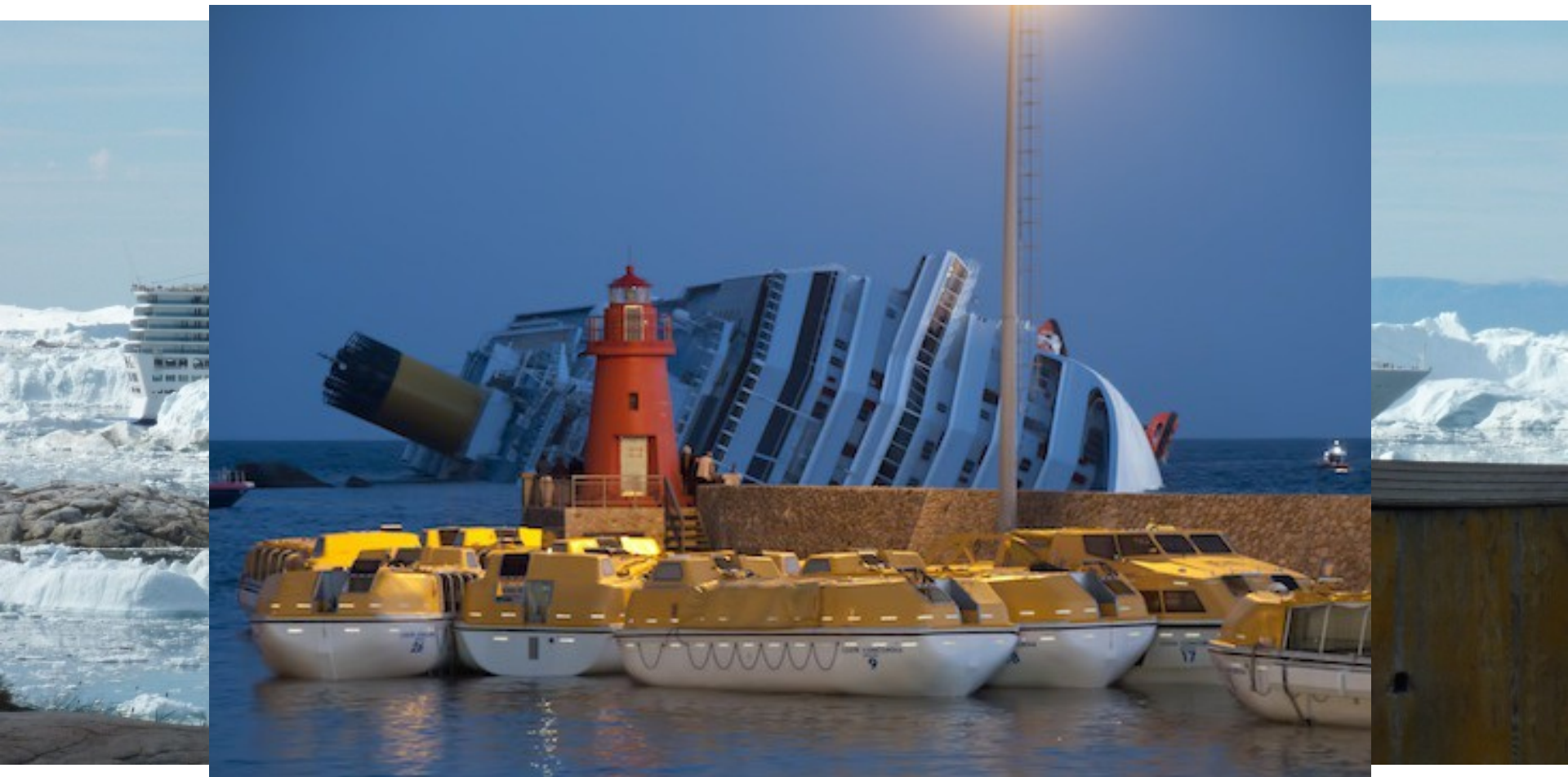


"Offshore is onshore"

*Building a Scalable Search and Rescue (SAR)
Infrastructure in the Arctic*

Rasmus Dahlberg, PhD Fellow
Copenhagen Center for Disaster Research
Danish Emergency Management Agency

This keeps me awake at night



The NORDRESS project

- Nordic Resilience and Societal Security
- One of two new Nordic Centres of Excellence on societal security
- Kick-off: January 2015
- Funding: 2015-2020
- Funded by NordForsk
- Hosted by the University



The NORDRESS project

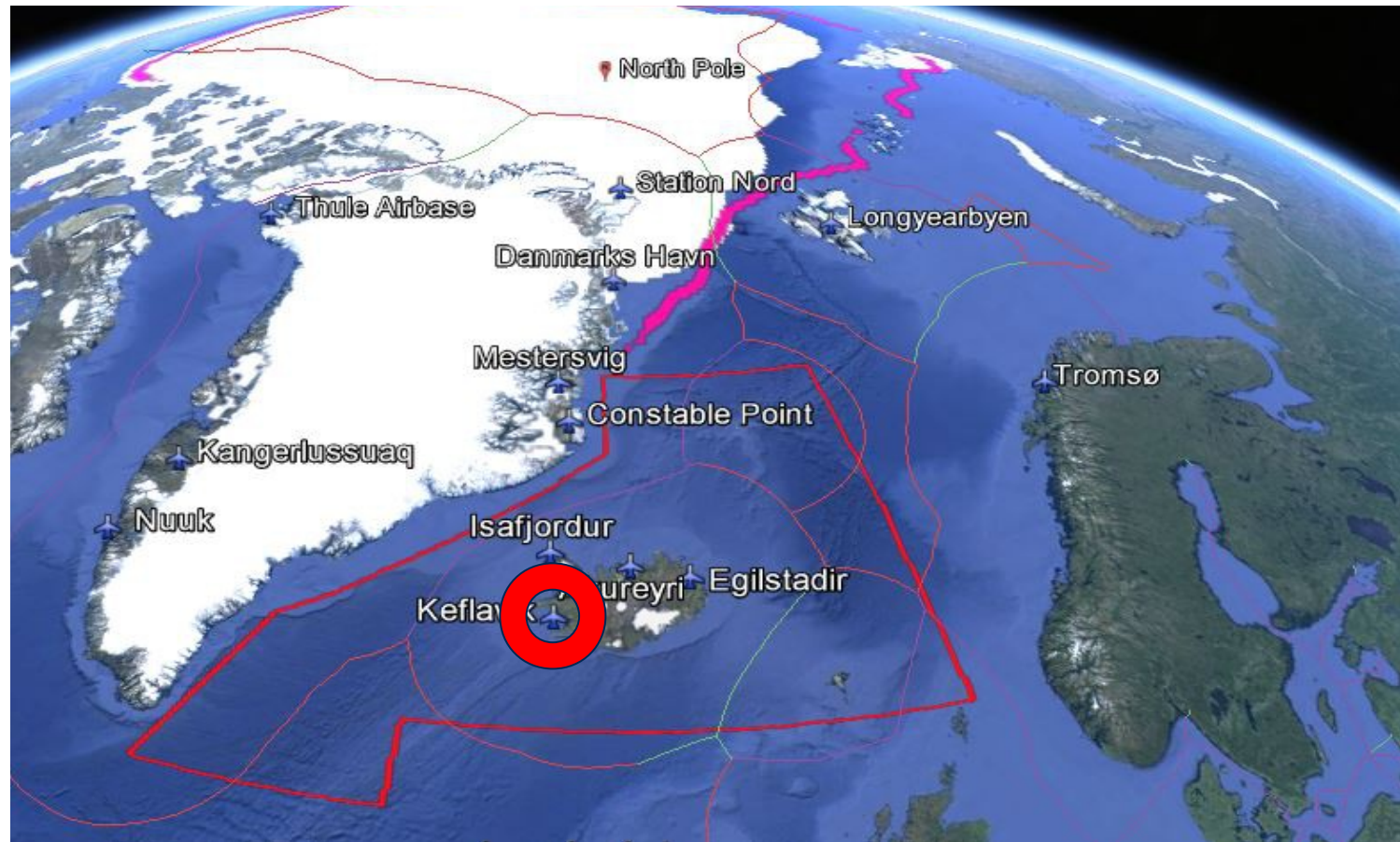
Work Package 5.4 tasks:

1. Mapping of offshore hazards and vulnerabilities in the Arctic.
2. Investigation and evaluation of existing modes of organizational learning and knowledge capturing from Search and Rescue Exercises in the Arctic.
3. Investigating existing modes of imagining, discovering and reacting to emerging offshore hazards and vulnerabilities in the Arctic.
4. Development of a concept for computer-assisted cross-boundary tabletop SAR exercises in the Arctic.
5. **A feasibility study of the establishment of an “International Rescue Hub” at the former US Naval Air Station in Keflavík, Iceland.**

Arctic Challenges

- Number of transpolar flights and cruise ships in the Arctic is increasing
- Distances and lack of infrastructure in the Arctic are *not* decreasing...
- A multitude of stakeholders
- Extreme uncertainties wrt climate, policy, economy and everything else...

Keflavík Rescue Hub



Keflavík Rescue Hub



Keflavík Rescue Hub



Former US Naval Air Station Keflavík

- Abandoned by the US forces in 2006
- Operated by the Icelandic Coast Guard
- Used for Nato Air Policing Missions etc.

Facilities:

- Joint Command & Coordination center
- Very large runways, aprons etc.
- Hangar 831 with storage areas
- Accomodation for 200+ people
- Good access to Icelandic infrastructure:
 - Reykjavík port
 - National Hospital (triage facilities)

Feasibility study

- Logistics or coordination?
 - Competencies and capacities
 - Legal and policy matters (HNS)
 - Funding, ownership, responsibility
 - Way ahead: planning and execution
- Open symposium in Reykjavík Dec 1
- Expert workshop in Keflavík Dec 2

Highlights from the expert workshop

- Focus must be on the "3 Cs":
Coordination, Communication and Common situational awareness
- Secure scalability by creating a "platinum level" coordination of coordinators
- Institutionalize the concept by creating private partnerships
- Set up a "SAR Academy" at the base

Next step

- LIVEX16:
 - Large-scale exercise conducted off the coast of Greenland May 2016
 - **Scenario:** Expeditionary cruise ship with 200 people aboard collides off Nuuk with a small product tanker
 - **Aim:** To test co-operation among civilian/military/private sectors/actors

Next step



Additional information

COPE

Copenhagen Center for Disaster Research

Kasmus Dahlberg

dahlberg@sund.ku.dk

COPE: cope.ku.dk

NORDRESS: nordress.hi.is

